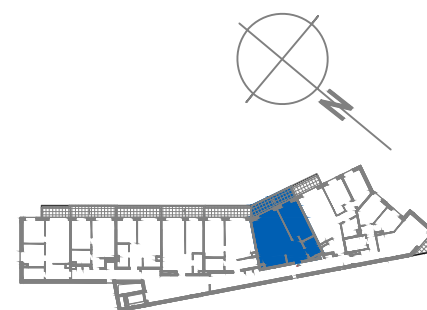




1	Przedpokój	7.04m <sup>2</sup>
2	Łazienka	4.54m <sup>2</sup>
3	Salon z aneksem	30.09m <sup>2</sup>
4	Pokój	15.18m <sup>2</sup>
<b>SUMA</b>		<b>56.85m<sup>2</sup></b>
	Balkon	9.68m <sup>2</sup>



 Ściany do zachowania  
 Ściany działowe możliwe do wyburzenia