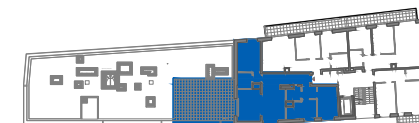
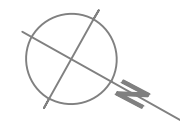




1	Przedpokój	14.10m ²
2	Korytarz	1.54m ²
3	Pokój 1	12.09m ²
4	Pokój 2	9.66m ²
5	Pokój 3	13.16m ²
6	Łazienka 1	3.64m ²
7	Łazienka 2	4.36m ²
8	Salon z aneksem	30.22m ²
SUMA		88.77m²
Taras		45.68m ²



 Ściany do zachowania
 Ściany działowe możliwe do wyburzenia