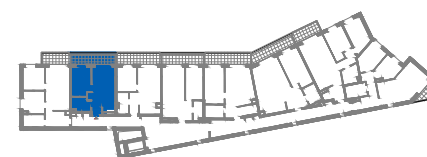
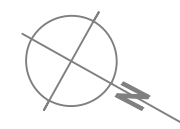




|             |                 |                           |
|-------------|-----------------|---------------------------|
| 1           | Przedpokój      | 1.32m <sup>2</sup>        |
| 2           | Łazienka        | 4.77m <sup>2</sup>        |
| 3           | Salon z aneksem | 19.46m <sup>2</sup>       |
| 4           | Pokój           | 10.65m <sup>2</sup>       |
| <b>SUMA</b> |                 | <b>36.20m<sup>2</sup></b> |
|             | Balkon          | 8.52m <sup>2</sup>        |



 Ściany do zachowania  
 Ściany działowe możliwe do wyburzenia