

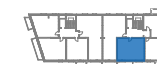


1	Korytarz	6,03 m <sup>2</sup>
2	Łazienka	4,83 m <sup>2</sup>
3	Pokój	13,53 m <sup>2</sup>
4	Salon z aneksem kuch.	22,76 m <sup>2</sup>

**SUMA 47,15 m<sup>2</sup>**

Loggia 6,11 m<sup>2</sup>

 ściany do zachowania  
 ściany działowe możliwe do wyburzenia



ul. Stanisława Worcella

