

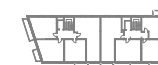
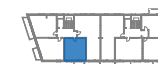


1	Korytarz	5,74 m <sup>2</sup>
2	Łazienka	4,24 m <sup>2</sup>
3	Pokój	9,93 m <sup>2</sup>
4	Salon z aneksem kuch.	17,91 m <sup>2</sup>
<b>SUMA</b>		<b>37,82 m<sup>2</sup></b>

Loggia 4,14 m<sup>2</sup>

 ściany do zachowania  
 ściany działowe możliwe do wyburzenia



ul. Stanisława Worcella

