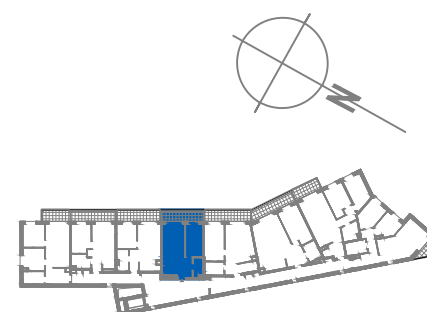




| | | |
|-------------|-----------------|---------------------------|
| 1 | Przedpokój | 4.47m ² |
| 2 | Łazienka | 3.37m ² |
| 3 | Salon z aneksem | 20.90m ² |
| 4 | Pokój | 10.90m ² |
| SUMA | | 39.64m² |
| | Balkon | 7.96m ² |



 Ściany do zachowania
 Ściany działowe możliwe do wyburzenia